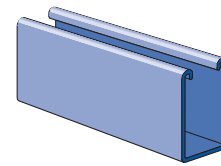
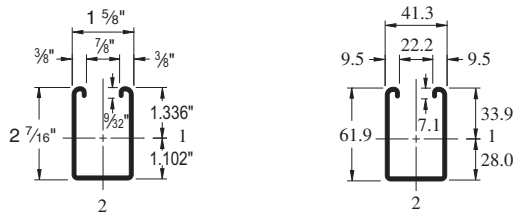


P5500

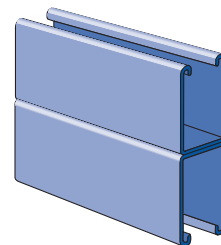
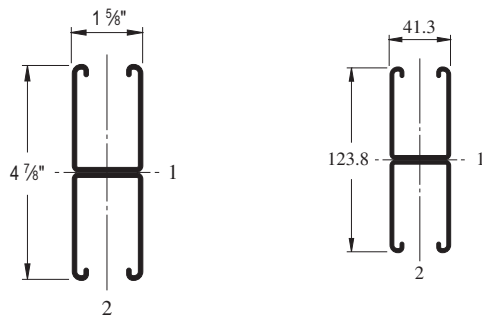
GR PG



Wt/100 Ft: 247 Lbs (367 kg/100 m)  
 Allowable Moment 9,820 In-Lbs (1,110 N•m)  
 12 Gauge Nominal Thickness .105" (2.7mm)

P5501

GR PG



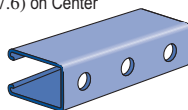
Wt/100 Ft: 494 Lbs (734 kg/100 m)  
 Allowable Moment 28,940 In-Lbs (3,270 N•m)  
 12 Gauge Nominal Thickness .105" (2.7mm)

P5500 HS

P5500 KO

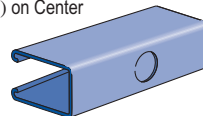
P5500 SL

9/16" (14.3) Dia. Holes  
 1 7/8" (47.6) on Center



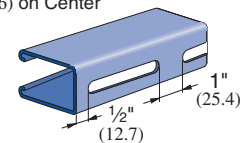
Wt/100 Ft: 242 Lbs (360 kg/100 m)

7/8" (22.2) Knockouts  
 6" (152.4) on Center



Wt/100 Ft: 247 Lbs (368 kg/100 m)

Slots are  
 3" (76.2) x 13/32" (10.3)  
 4" (101.6) on Center

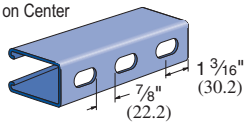


Wt/100 Ft: 242 Lbs (360 kg/100 m)

P5500 T

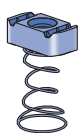
GR PG

Slots are  
 1 1/8" (28.6) x 9/16" (14.3)  
 2" (50.8) on Center



Wt/100 Ft: 242 Lbs (360 kg/100 m)

CHANNEL NUTS (REFER TO HARDWARE SECTION FOR DETAILS)



P5506-0832  
 P5506-1024  
 P5506-1420  
 P5507  
 P5508  
 P5509  
 P5510



P1006T1420  
 P1008T  
 P1010T



P1012  
 P1023  
 P1024



P3006-0832  
 P3006-1024  
 P3006-1420  
 P3007  
 P3008  
 P3009  
 P3010



P3016-0632  
 P3016-0832  
 P3016-1024  
 P3016-1420

Channel Finishes: PL, GR, HG, PG, ZD; Standard Lengths: 10' & 20'